

Vianti Falls



The Vianti Falls system adds beauty to any block wall with the simple elegance of its cascading water. A stainless steel spillway creates a soothing sheet of water and pouring scuppers are tasteful accents to the feature's focal point. Vianti Falls spillways by EasyPro are a stylish highlight for any patio, entry way or stand alone feature.



Vianti Falls

Spillways



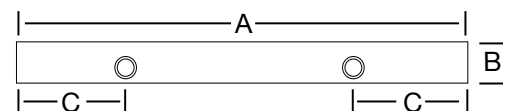
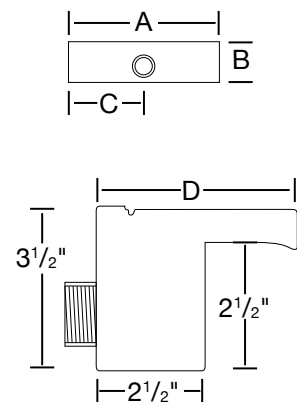
VIANTI FALLS SPILLWAYS

Internal baffles create a smooth sheet of water that cascades to the pool or basin below. The open flow design prevents clogging from debris or hard water. High quality 304 stainless steel construction resists unsightly corrosion. Illuminating the falls allows for a stunning night time display. Ideal for formal features, signs and swimming pool features.

| Spillway | Spillway Width | Spillway Lip Style | 1" fpt inlet(s) | Recommended Flow (gph) | Dimensions | | | |
|----------|----------------------------------|--------------------|-----------------|------------------------|----------------------------------|---------------------------------|----------------------------------|----------------------------------|
| | | | | | A | B | C | D |
| SSS11 | 11 ¹ / ₂ " | 2" Lip | Single | 600 | 11 ¹ / ₂ " | 3 ¹ / ₂ " | 5 ³ / ₄ " | 4 ¹ / ₂ " |
| SSS23 | 23 ¹ / ₂ " | 2" Lip | Single | 1200 | 23 ¹ / ₂ " | 3 ¹ / ₂ " | 11 ³ / ₄ " | 4 ¹ / ₂ " |
| SSS35 | 35 ¹ / ₂ " | 2" Lip | Dual | 1800 | 35 ¹ / ₂ " | 3 ¹ / ₂ " | 9" | 4 ¹ / ₂ " |
| SSS47 | 47 ¹ / ₂ " | 2" Lip | Dual | 2400 | 47 ¹ / ₂ " | 3 ¹ / ₂ " | 12" | 4 ¹ / ₂ " |
| SSS59 | 59 ¹ / ₂ " | 2" Lip | Triple | 3000 | 59 ¹ / ₂ " | 3 ¹ / ₂ " | 12" | 4 ¹ / ₂ " |
| SSS71 | 71 ¹ / ₂ " | 2" Lip | Triple | 3600 | 71 ¹ / ₂ " | 3 ¹ / ₂ " | 12" | 4 ¹ / ₂ " |
| SSS611 | 11 ¹ / ₂ " | 6" Lip | Single | 600 | 11 ¹ / ₂ " | 3 ¹ / ₂ " | 5 ³ / ₄ " | 8 ¹ / ₂ " |
| SSS623 | 23 ¹ / ₂ " | 6" Lip | Single | 1200 | 23 ¹ / ₂ " | 3 ¹ / ₂ " | 11 ³ / ₄ " | 8 ¹ / ₂ " |
| SSS635 | 35 ¹ / ₂ " | 6" Lip | Dual | 1800 | 35 ¹ / ₂ " | 3 ¹ / ₂ " | 9" | 8 ¹ / ₂ " |
| SSS647 | 47 ¹ / ₂ " | 6" Lip | Dual | 2400 | 47 ¹ / ₂ " | 3 ¹ / ₂ " | 12" | 8 ¹ / ₂ " |
| SSS659 | 59 ¹ / ₂ " | 6" Lip | Triple | 3000 | 59 ¹ / ₂ " | 3 ¹ / ₂ " | 12" | 8 ¹ / ₂ " |
| SSS671 | 71 ¹ / ₂ " | 6" Lip | Triple | 3600 | 71 ¹ / ₂ " | 3 ¹ / ₂ " | 12" | 8 ¹ / ₂ " |
| SSS1535 | 35 ¹ / ₂ " | 15" Lip | Dual | 1800-2700 | 35 ¹ / ₂ " | 3 ¹ / ₂ " | 9" | 17 ¹ / ₂ " |
| SSS1547 | 47 ¹ / ₂ " | 15" Lip | Dual | 2400-3600 | 47 ¹ / ₂ " | 3 ¹ / ₂ " | 12" | 17 ¹ / ₂ " |
| SSS1559 | 59 ¹ / ₂ " | 15" Lip | Triple | 3000-4500 | 59 ¹ / ₂ " | 3 ¹ / ₂ " | 12" | 17 ¹ / ₂ " |
| SSS1571 | 71 ¹ / ₂ " | 15" Lip | Triple | 3600-5400 | 71 ¹ / ₂ " | 3 ¹ / ₂ " | 12" | 17 ¹ / ₂ " |

Note: Drawings are not to scale.

Vianti Falls spillways and stainless scuppers are proudly made in the USA.



Kits & Accessories



11" Spillway Kit
with Rectangle Basin



23" Spillway Kit
with Half-round Basin

VIANTI FALLS KITS

Stainless Steel Spillway

Choose from 11", 23", and 35" spillway kits. Available in 2" or extended 6" lip, these spillways are designed to fit into the block wall of your choice.

Basin

Half-round basin is 48" x 24" x 15 1/2" tall; Rectangle basin is 23" x 22" x 13 1/2" tall. High strength molded plastic; includes splash mat, and pump access cover.

Pump

Energy efficient EasyPro 850 gph, 1350 gph or 2200 gph magnetic drive pump. Three year limited warranty.

Plumbing

All kits include black flexible PVC pipe and fittings to connect pump and spillway.

Lighting (Optional)

LED light strips available in cool blue, soft white or multi-colored Cabrio lighting. Low voltage, submersible LED fits inside spillway to illuminate the falls.

Auto Fill Valve Available

Brass float switch style auto fill valve suggested

FIRE & WATER KIT

Add the mesmerizing effect of fire to Vianti Falls features.

Complete kit with 16" stainless burner, regulator, gas valve quick connect. Works great with half round basin kits above.

The features a water cooling tray to prevent any chance of basin overheating and easily ties into the existing pump line.

Burner is designed for use with natural gas, however a propane conversion is available for easy installation using a 20 pound propane tank. Ideal for displays or home installations where permanent installation is not feasible.



LIGHTING

Add optional lighting for a stunning night time display. Choose from soft white, cool blue or Cabrio color changing LEDs.

All LED light strips are available in 11" to 35" sizes. Use in pairs for longer spillways.



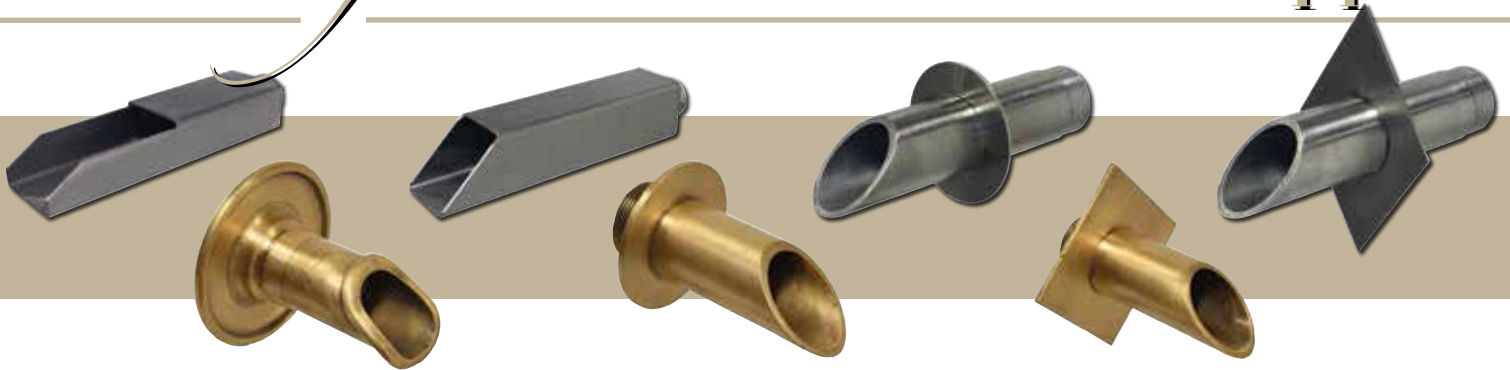
Cabrio Color Changing LEDs
Features 16 unique colors and multiple color changing modes to create the perfect ambiance.

cabrio
lighting series



Vianti Falls

Scuppers



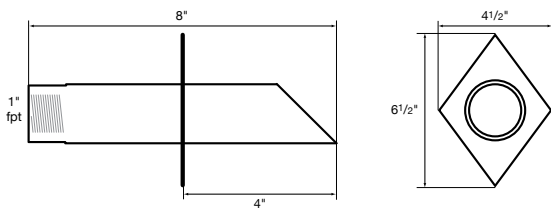
VIANTI FALLS SCUPPERS

These pouring scuppers are tasteful accents to a complete formal water feature. A low volume of water pours from these spouts highlighting the feature's focal point.

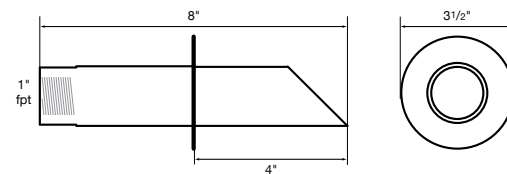
Stainless Steel Scupper Product Specifications

- 1" fpt inlet
- 5-10 gpm recommended flow rate
- 304 stainless steel

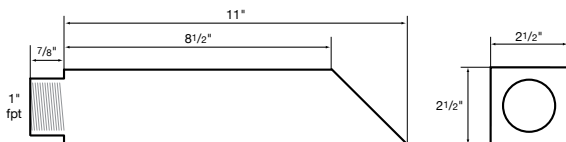
SWS2D — 2" round stainless wall scupper with diamond trim plate



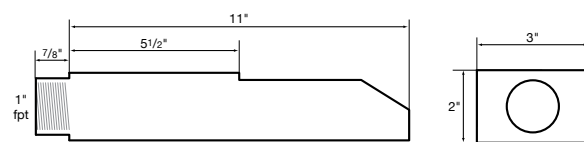
SWS2R — 2" round stainless wall scupper with round trim plate



SWS2S — 2 1/2" square stainless wall scupper



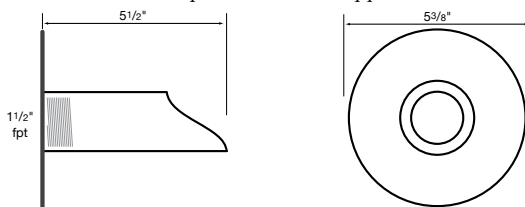
SWS3R — 3" wide rectangle stainless channel wall scupper



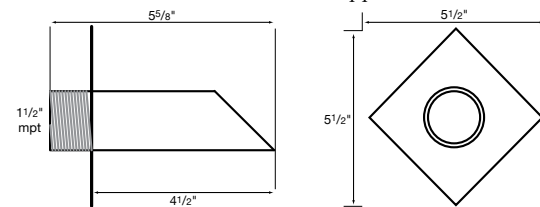
Brass Scupper Product Specifications

- 1 1/2" inlet
- Recommended flow rates — **BWS2D** and **BWS2R** 5-15 gpm, **BWS2F** 10-20 gpm

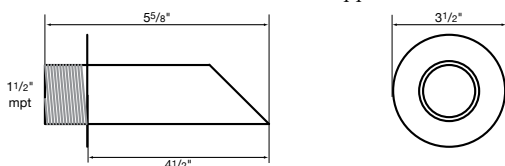
BWS2F — 2" antique brass wall scupper with round trim plate



BWS2D — 2" round brass wall scupper with diamond trim plate



BWS2R — 2" round brass wall scupper with round trim plate



Distributed By:



easypropondproducts.com

Note: Drawings are not to scale, for reference only