

LED2 Mini Lights



Submersible, Bright

Mini LED Lights

Instructions for Operation • Safety • Warranty

Thank you for purchasing the EasyPro Mini LED pond lights. With these lights you can make your fountain glow, illuminate your pond from within, highlight your waterfall from inside and outside the pond and extend the enjoyment of your water feature in the evening hours. This light may be used outside of the pond as landscape lighting as well. With these low voltage lights you can connect 16 lights to one 20 watt transformer.



Safety and Electrical Connections:

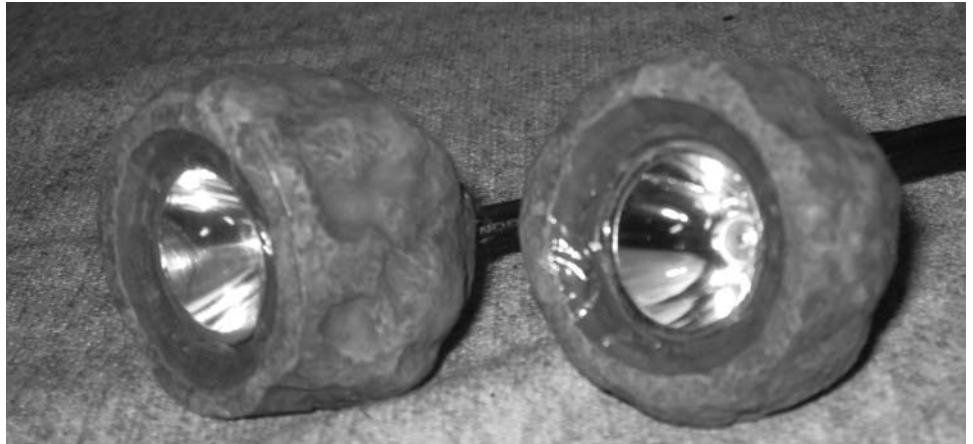
1. Always disconnect the electrical supply before handling, maintaining, repairing or installing any pond equipment.
2. Light(s) must be attached to a UL listed transformer.
3. Never hook the lights directly to a 110 volt or higher outlet.
4. Connect the transformer to a 110 volt receptacle that is protected by a Ground Fault Circuit Interrupter (GFCI).
5. Do not use this product in bathrooms or swimming pools.
6. All electrical work must be performed by a qualified technician. Always follow the National Electrical Code (NEC) or the Canadian Electrical Code as well as all local, state and provincial codes. Code questions should be directed to your local electrical inspector. Failure to follow electrical codes and OSHA safety standards may result in personal injury or equipment damage. Failure to follow manufacturer's installation instructions may result in electrical shock, fire hazard, personal injury or death, damaged equipment, provide unsatisfactory performance and may void manufacturer's warranty.

Installation:

1. Before installing the product make sure to check in the box for damaged or missing parts. Contact EasyPro immediately if pieces are missing or damaged.
2. Be sure the power is disconnected before installing the lights.
3. Place the light in the desired location of your water feature.
4. Run the cable back to the transformer.
5. When installing the light cable, run the wire back to the transformer and remove the protective cap off of one of the terminals on the transformer. Insert the two prong plug into the terminal and screw down the nut to make a weather tight seal.
6. Install transformer on a timer and enjoy.
7. Recommended 12 volt transformer for use with multiple lights is the MT20/20 watt.

Service and Maintenance of Submersible Lights

1. Disconnect the transformer from the power supply before service.
2. All parts of the lighting system should be checked on a regular basis to make sure the system is functioning properly.
3. The LED bulbs are not replaceable.
4. If the light output seems to be diminished, clean the lens with a clean damp cloth.



Replacement Parts and Accessories for Mini LED Lights - LED2

White LED lights (2)	LED2W
Yellow LED lights (2)	LED2Y
Red LED lights (2).....	LED2R
15' extension with three outlets	LEDEX
20 watt transformer	LEDT

Warranty

This product is warrantied against any mechanical or material defects for a period of one year from the date of purchase. Warranty only covers properly installed and maintained units.

The warranty does not cover normal wear and tear, nor any deterioration suffered through overloading, improper use, negligence or accident. Similarly, any modification made by the purchaser to the product will cause the warranty to be null and void.

All returned items will be inspected to determine cause of failure before warranty is approved.

Warranty does not cover any cost associated with the installation or removal of the product subject to warranty claim.

An RA number must be obtained by calling EasyPro Pond Products at 800-448-3873. It is your responsibility to pay the return shipping charges. Be sure to include the RA number, original receipt (in the form of an invoice or sales receipt), name, return address and phone number inside of the package. No warranty claims will be honored without the original receipt.

Ensure the product is properly packaged and insured for the replacement value. Damage due to improper packaging is the responsibility of the sender.

The manufacturer or supplier shall not be held liable for any damages caused by defective components or materials of this product; or for loss incurred because of the interruption of service; or any consequential/incidental damages and expenses arising from the production, sale, use or misuse of this product.

The manufacturer or supplier shall not be held liable for any loss of fish, plants or any other livestock as a result of any failure or defect of this product.

